

Interstate Pad Sites Available For Sale or Lease at Restaraunt Row



Lamey Bridge Road and Interstate 10 D'Iberville, MS

AVAILABLE



PROPERTY DESCRIPTION

Located at the corner of Lamey Bridge Road and Interstate 10 in booming D'Iberville this multi-family and multi-tenant retail mixed-use development opportunity has great access to high volume traffic and rooftops. The SW corner of I-10, a 6-lane main U.S. Hwy, & I-110 is a great location to avoid long waits in traffic on Sangani Blvd.

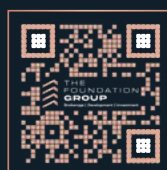
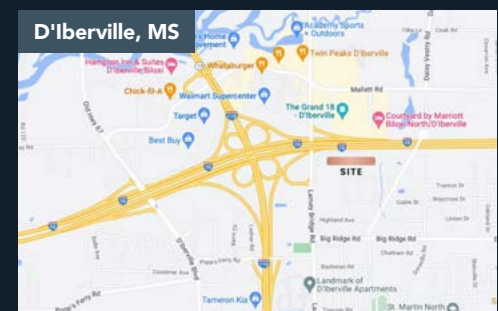
PROPERTY DETAILS

- Property Type:** Land
- Acquisition Options:** Fee Simple Purchase or Lease
- Size:** 14 Acres
- Location:** Corner of I-10 and Lamey Bridge Rd.
- Zoning:** C-3B
- Traffic Count:** 69k VPD I-10
- Asking Price:** Inquire for Price

INVESTMENT HIGHLIGHTS

- Suitable for Multi-family and Multi-tenant Retail
- Commercial uses allowable by right
- Interstate access and visibility
- Close to other amenities

*The Foundation Group makes no representation or warranties regarding the properties or information discussed herein. All parties need to verify information independently.



Charles Taylor

Commercial Broker | Developer

228.365.7774

charles@thefoundationgroup.biz

foundationgroupcre.com

Interstate Pad Sites Available For Sale or Lease at Restaraunt Row

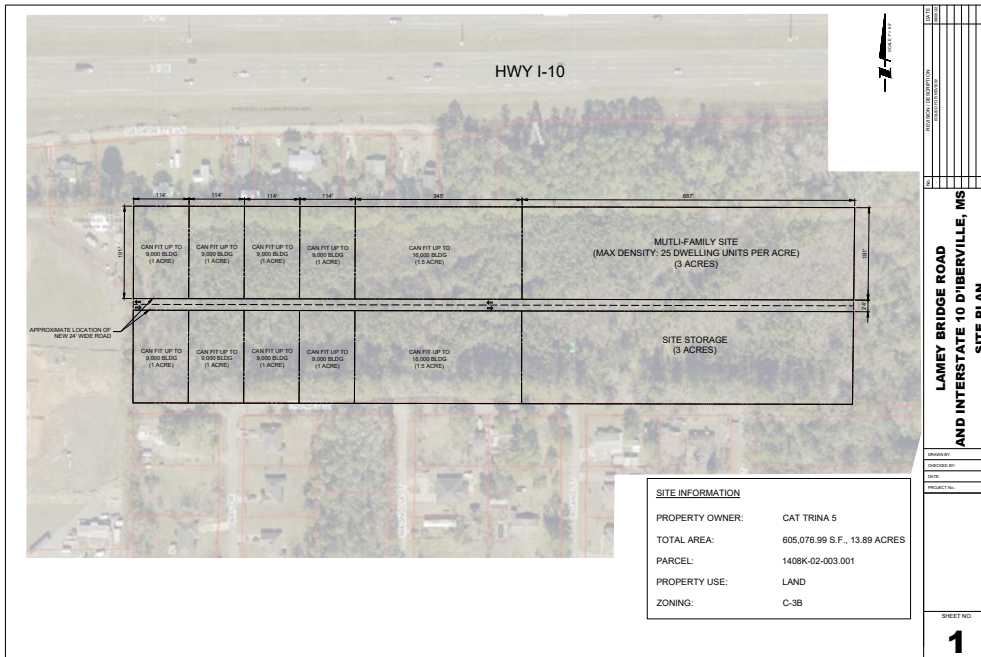


Lamey Bridge Road and Interstate 10 D'Iberville, MS

AVAILABLE



SITE PLAN



*The Foundation Group makes no representation or warranties regarding the properties or information discussed herein. All parties need to verify information independently.

