

17 Acres Ready for Development & Sale

Direct Access to Crossroads of I-10 & I-110



Lamey Bridge Road and Interstate 10 D'Iberville, MS

AVAILABLE



PROPERTY DESCRIPTION

Located at the corner of Lamey Bridge Road and Interstate 10 in booming D'Iberville this multi-family and multi-tenant retail mixed-use development opportunity has great access to high volume traffic and rooftops. The SW corner of I-10, a 6-lane main U.S. Hwy, & I-110 is a great location to avoid long waits in traffic on Sangani Blvd.

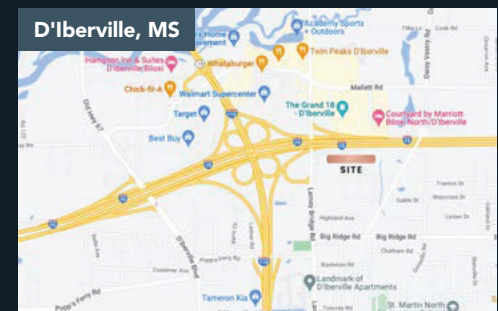
PROPERTY DETAILS

- Property Type:** Land
- Acquisition Options:** Fee Simple Purchase or Lease
- Size:** 14 Acres
- Location:** Corner of I-10 and Lamey Bridge Rd.
- Zoning:** C-3B
- Traffic Count:** 69k VPD I-10
- Asking Price:** Inquire for Price

INVESTMENT HIGHLIGHTS

- Suitable for Multi-family and Multi-tenant Retail
- Commercial uses allowable by right
- Interstate access and visibility
- Close to other amenities

*The Foundation Group makes no representation or warranties regarding the properties or information discussed herein. All parties need to verify information independently.



Charles Taylor

Commercial Broker | Developer

228.365.7774

charles@thefoundationgroup.biz

foundationgroupcre.com

17 Acres Ready for Development & Sale

Direct Access to Crossroads of I-10 & I-110

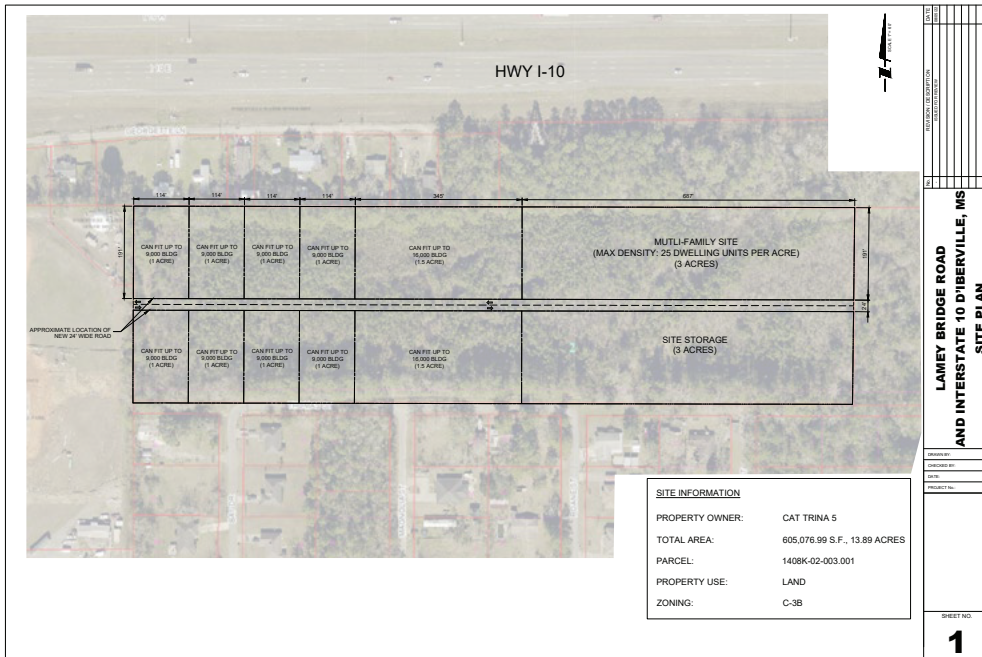


Lamey Bridge Road and Interstate 10 D'Iberville, MS

AVAILABLE



SITE PLAN



*The Foundation Group makes no representation or warranties regarding the properties or information discussed herein. All parties need to verify information independently.

